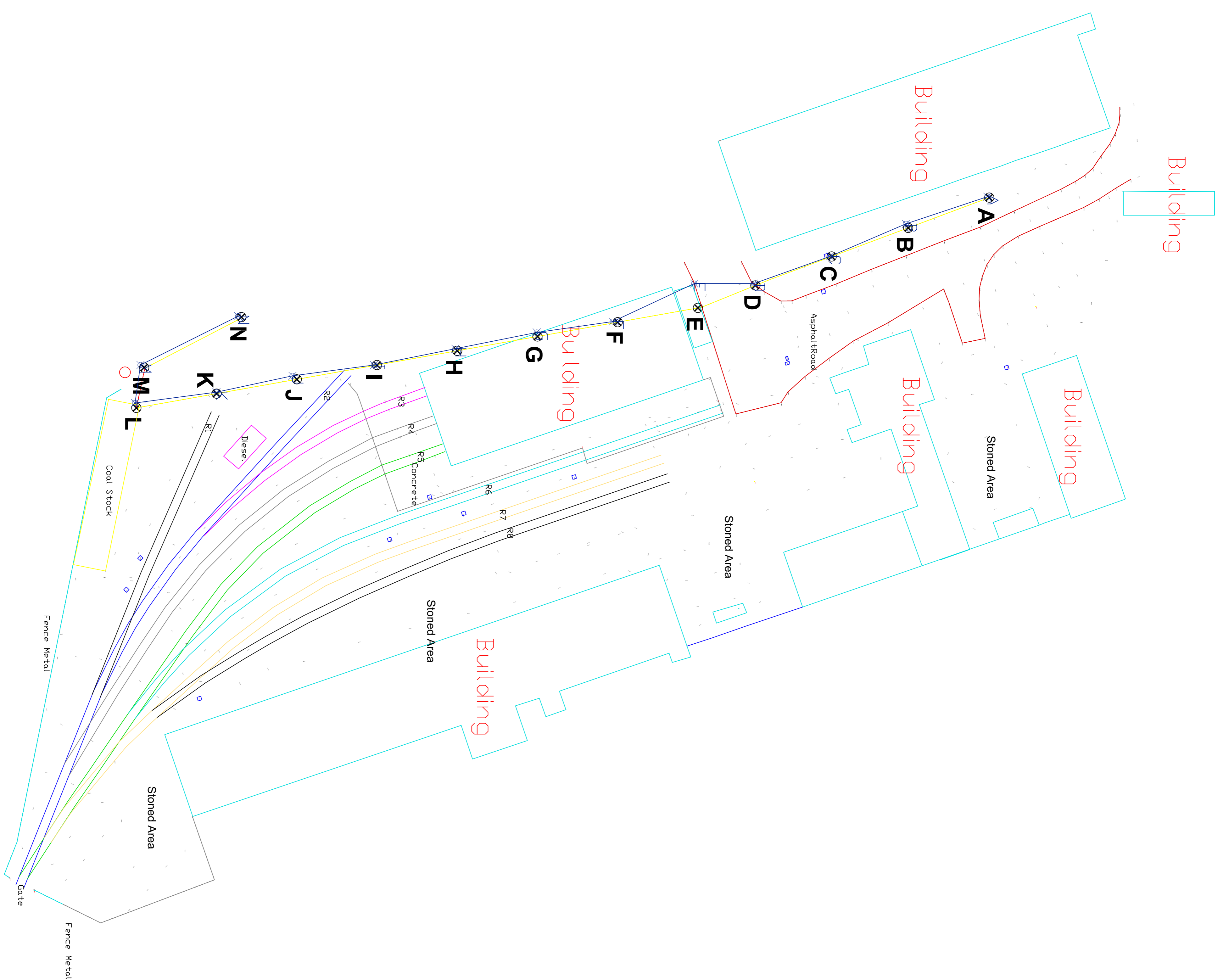


NOTES:

Legend

○ B	BOLLARD
○ BS	BUS STOP
○ TV	CABLE TV
○ ER	EARTH ROD
○ P	ELECTRIC PILE
○ EC	ELECTRIC COVER
○ FH	FIRE HYDRANT
○ GV	GAS VALVE
○ GAS	GAS MARKER
○ G	GULLY
○ IC	INSPECTION COVER
○ P	LAMP POST
○ M	MANHOLE
○ S	ROAD SIGN
○ SV	STOP VALVE
○ TP	TELECOM POLE
○ T	TELECOM COVER
○ TL	TRAFFIC LIGHT
○ WM	WATER METER
△ 100	SURVEY STATION
* 22.22	SPOT LEVEL
—	FENCE
—	ROAD/HARD EDGE
—	BREAK OF SLOPE



SCALE

DRAWN BY

DRAWING TITLE

DRAWING No:

SHEET No:

DATE